



SERVICE

LEADERSHIP

ADVENTURE



2008-09 ANNUAL REPORT

## EXECUTIVE DIRECTOR'S MESSAGE

When I first came to Caltech, I never would have imagined that 15 years later, I would still be here. Being an anniversary year for me, I did what many of us do during landmark years, I reflected on why I was still at Caltech and moreover, did I want to continue to be here? After much soul searching, the answer was a resounding yes to both questions. Of the many reasons, here are my top three:

1. The students are fantastic! Over the years, I have built some wonderful relationships with students and have enjoyed watching them develop and grow. Now, I continue to keep up with many of them through Facebook and the occasional visit to the campus. I also continue to develop new relationships with the new student groups. They keep me on my toes!
2. The Y's mission and philosophy resonates with what is personally important to me. A core principle of the Y is that learning happens outside the classroom. Our approach to education is hands-on, where students take the lead. This tenet permeates all we do and guides our work. I love it!
3. The support I receive is amazing! Our Board members are committed, helpful, and generous with their time. Y staff are passionate about their work, and our campus colleagues are continuously advocating for the Y.

As a new professional, I was often asked where I saw myself in the next five years. Well, I saw myself at a place like the Caltech Y. Eventually, after I became Executive Director, I was asked where I saw myself after the Caltech Y. Then and now, I have no answer. This is where I want to be and where I continue to want to be. I can't imagine myself anywhere else. I love the Y for the reasons above and many others.

I'm sure that many of you out there have your own reasons for loving the Y, and if you don't, you will after reading this annual! Enjoy!

**Athena R. Castro**  
Executive Director



**Athena R. Castro**  
Executive Director  
of the Caltech Y



## PRESIDENT'S MESSAGE

The Caltech Y is an essential part of the Caltech community. Although it doesn't offer a traditional classroom experience, the Y is an educational institution in a broader sense. Through this highly regarded organization, students can take ownership of programs and initiate, coordinate, and lead various activities. A typical month of Y programming might include speakers on topics ranging from ending chronic homelessness, to solving global problems, to enjoying outdoor adventures. A typical day might include going to the opera or the movies, volunteering to read to children at a local elementary school, or tutoring high-school students from the surrounding community. Through it all, our students are learning and growing, and that is what education is all about.

Involvement with the Y affords our students opportunities to experience life beyond the classroom and the laboratory. They can apply their intelligence, creativity, and problem-solving skills to real-life social situations. A Caltech education prepares students to become leaders in science and engineering. Y programs enhance that preparation by challenging students to examine values—both their own and society's. Whatever the activity, the Y encourages students to expand the scope of their thinking.

The Y bridges the gap between the classroom and life, helping students awaken and then deepen their sense of what it means to be citizens of the world. It has long been an invaluable resource for our Caltech students, and indeed for the entire campus community.

**Jean-Lou Chameau**  
President  
California Institute of Technology



**Jean-Lou Chameau**  
President of the  
California Institute  
of Technology



## CALTECH Y PROGRAMS

The Y's mission to enrich student life and to challenge students to grow into responsible citizens is accomplished through programs and services. Y programs expose students to a diverse range of issues, create opportunities that are exciting and fun, provide experiential learning opportunities, and balance a rigorous academic curriculum. Most importantly, we seek to develop students' skills, ingenuity, and leadership to make a positive impact through the process of planning and coordinating events.

While there is a great deal of overlap, Y programs can be loosely divided into four categories: Outdoor Adventure; Community Service; Education, Advocacy & Activism; and Cultural and Social. A complete listing of 2008-09 programs can be found on pages 11-12.

### OUTDOOR ADVENTURE PROGRAMS

The goal of the Outdoor Adventure Program is to develop wilderness skills, encourage outdoor awareness, and . . . have a lot of fun. The Y-Outdoors Committee produced action packed trip itineraries and opportunities that empowered students to explore the great outdoors. These activities promote a well-rounded, healthy experience at Caltech.

One of the first experiences at Caltech, for many students, is the Y-Hike backpacking trip. The Y-Hike is a great opportunity for incoming students to meet new friends and explore the beautiful terrain of California's High Sierras. This year's week-long trip to the Ansel Adams Wilderness outside of Mammoth Lakes, California was led by teams of experienced Caltech hikers, some of whom were Y Hikers their first year at Caltech.

The Caltech Y led camping trips, moonlight hikes, backpacking trips, and kicked it all off with a harbor kayaking and beach trip for new students during Orientation. For those eager to learn about venues or adventures, or wanting pick up some outdoor skills, the Adventure 101 Series offered lunch talks that encouraged students to explore on their own. Of course, our trips also included great National Parks in our area including the Grand Canyon, Death Valley, and Yosemite combined with Caltech's Centennial Grove.

Through trips like these, the Caltech Y successfully encourages students to pursue activities outside of their demanding academic environment, thus creating a healthier student body.



Left: Students walk the trails of the South Rim at Grand Canyon National Park. Below: Camping and warming toes at Yosemite National Park.



Right: For some students, the Y's trip to the Grand Canyon is their first visit to the national park. It is a memory that will last forever. Below: DC Policy trip, year three, warmer than last.



In addition to leading great trips, the Caltech Y maintains an inventory of camping and backpacking gear that students use throughout the year. This is yet another way the Caltech Y encourages students to get out and explore the great outdoors.

## COMMUNITY SERVICE PROGRAMS

The Community Service Program provides a valuable service to the community through its continued efforts to bring students out of the classroom and into the neighborhood. The Y gives community organizations and agencies an opportunity to receive much-needed assistance on various projects. They benefit from student volunteers ready and willing to work in any capacity for the agency. Students, on the other hand, learn about the community and how they can make a tangible difference.

Throughout the year, you can find students volunteering their time and efforts almost every day for those in need. The Y takes on the huge task of matching students with community agencies and projects where their skills can be best utilized. For example, serving meals at Pasadena’s Union Station Homeless Shelter, tutoring PUSD students in the RISE Program, and Reading to Kids in Downtown LA happen regularly.

Alternative Spring Break (ASB), the annual service trips during spring break, included a trip to San Diego focusing on environmental issues and one to Salinas focusing on the homeless and migrant worker communities. The San Diego group maintained trails, cleaned up a local beach, and removed non-native vegetation in a bird sanctuary . . . all in a magnificent setting. The Salinas group prepared and served meals, met the Mayor to hear about community issues and even visited San Francisco as a fun wrap up to the trip. Both trips were insightful and productive for the students who participated.

The annual Make-A-Difference Day campus-wide service day was a huge success this year. An enthusiastic ExComm leader team coordinated 17 different projects in the Greater LA Area with more than 150 participants. Projects included work sites at the Boy’s and Girl’s Club, Hillside’s Home for Children, Vista Nova Home for the Blind, and Rebuilding Together Pasadena. Each and every year the Caltech Y successfully introduces many students to community service opportunities in our area . . . and Make-A-Difference Day is a big part of that.



Top: Yvonne Pao tutors a RISE student. Middle: Make-A-Difference Day volunteers Ed Chen, Bill Chen, Jessica Su & Elaine To. Below: ASB Volunteer Aythan Familier in San Diego. Bottom: World Fest 2009.

## EDUCATION, ADVOCACY & ACTIVISM

Through Education, Advocacy & Activism programming, the Y seeks to raise awareness of local and global issues as well as to develop in the student population a confidence in one's ability to affect social change, and the knowledge of how to do so.

As the national excitement grew around the upcoming presidential elections, The Social Activism Speaker Series (SASS) kicked off the year with a series of events focused on the elections. In addition, invited speakers discussed topics ranging from genocide, technology that benefits developing countries, and systems of injustice.

The ExComm was also active in focusing attention on issues of importance by hosting Issue Lunches, discussing Darfur with the group Stop Genocide Now, and national and world hunger with the group Bread for the World. They continued to share science with the world through the Pasadena Area Liberal Arts Council with student led talks on powering the planet, neuroscience, and the current economic crisis.

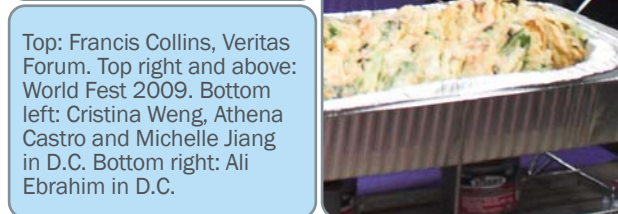
Once again, the Washington, D.C. Science and Policy Trip offered a group of 25 with an opportunity to advance their political understanding through informative and challenging discussions with Caltech alumni working within the science and policy sectors of Washington, D.C. Students also had the opportunity to explore the nation's capital.

## CULTURAL AND SOCIAL ACTIVITY

On the lighter side, cultural and social activities offer programs that are purely aimed at entertainment and fun.

The Explore LA Series continued to get students off campus on trips to the LA Zoo, and to see Phantom of the Opera, Rent, and the Nutcracker. The Huntington Tea brought out Faculty to mingle with students in the beautiful Huntington Gardens. And of course, each term ended with Decompression to help students relieve stress prior to finals.

On the cultural side, the Caltech Y is well represented on the Cultural Programming Group which produces a variety of events including the Dr. Martin Luther King, Jr. Commemoration Week, Black History Month and Hispanic Heritage Month.



Top: Francis Collins, Veritas Forum. Top right and above: World Fest 2009. Bottom left: Cristina Weng, Athena Castro and Michelle Jiang in D.C. Bottom right: Ali Ebrahim in D.C.



International Week was renamed World Fest but continued with all the success of the past, including over 500 students attending the annual International Food Fest and Culture Show. World Fest is an event that builds bridges between and across cultures while at the same time giving the international student community the opportunity to promote and share their cultures.



Top: Relaxing by a stream in Yosemite National Park.  
Middle: World Fest 2009.  
Above: Carolyn Valdez & Kathryn Gunn enjoying the annual Caltech Y Huntington Tea at the Huntington Gardens and Library.

## CALTECH Y MISSION

The Caltech Y enriches student life and challenges students to grow into responsible citizens of the world.

## CALTECH Y STAFF

2008-2009

The Caltech Y staff exists to support the vision and efforts of the ExComm and the Board of Directors.

**Athena Castro**  
Executive Director

**Greg Fletcher**  
Student Activities &  
Community Service Director

**Christopher Kealey**  
Marketing & Development Director

**Carmelita Hearn**  
Administrative Assistant

**Alycen Chan**  
Outreach Programs Director

**Heather Bixby**  
Student Activities Coordinator

## BOARD CHAIR REPORT

It has been a pleasure to serve on the Board of the Caltech Y and an honor to be asked to serve as chair. The Role of the Caltech Y is more important than ever in these challenging times. The members of the Board of the Caltech Y remain committed to the continuing success of the Y; contributing their time, their many and varied talents and strong financial support. Without help from the many board members, my job as chair would be impossible! I thank the entire board for their dedicated participation.

The economic situation has resulted in some budget constraints. The students themselves did an outstanding job in paring expenses in such a way as to impact the programs as little as possible. Their thoughtfulness and creativity in meeting this challenge impressed all of us – these are the leadership qualities the Y is trying to nurture and is succeeding beyond expectations. It is a continuing pleasure to work with the Caltech students, especially those on the student ExComm, as they grow into their roles as the future leaders of our communities and of the world.

Because of the dedication and hard work of the staff, the students, and the board, the Caltech Y had another good year with the continuation of many programs, including the RISE tutoring program,

Make-A-Difference Day, numerous interesting Social Activism Series speakers, outdoor and Explore LA activities and other well-received community service projects. I salute especially the staff for working as a team to help the students to make all their programs successful!

The current economic climate has challenged the board to think creatively about its role in the life of the Caltech Y. This is an unusual board in that while it provides overall guidance, its members also actively participate in many of the programs

as an extra pair of hands, drivers, contacts, etc. Active fundraising by the board has not been a priority until recently. This year we continued work on our action plan to strengthen this aspect. As part of this venture we held our first ever Caltech Y Golf Tournament! Everyone had a blast and the results were promising enough that we plan to continue this venture. We are also putting in place multiple other strategies to strengthen the board and publicize the Y more widely. I thank the board members, the staff and the students for their support as we grow into the new roles.

In some ways, the re-evaluation of programs and roles by all of us has forced us, or at least me, to really reflect on how important the services provided by the Caltech Y are to campus life. I know from my time as a student that extracurricular activities, especially those that help build self esteem, pride of campus or help foster an appreciation for our place in the world, are not always a top priority. Fortunately, the Caltech Y has always been there to help the students deal with academic pressures in a positive and constructive way. I also know that Caltech has had to tighten its belt too and it is only because of truly dedicated Caltech staff that Institute programs complementary to those of the Y continue to be offered in relative abundance. However, this points out why it is so important to maintain the Caltech Y as an independent entity where the students have another opportunity to develop their leadership skills.

The Caltech Y currently enjoys enormous support from the Institute, for which I deeply thank Drs. Jean-Lou Chameau and Carol Carmichael. It is still probably wise, as in Aesop's fable of the ant and grasshopper, to consider and prepare for other possible scenarios, should Caltech's support be impacted in the future. This is why we are profoundly grateful to you, our donors, for your interest, time and financial support. Your investment, whether large or small, in the students of Caltech through the programs of the Caltech Y are key in fostering truly responsible citizens of the world.

Thank you all for your continued support!



**Susan Murakami, BS '75**  
Board Chair



Top: Board members Debbie Dison Hall, Susan Murakami and Michelle Jiang at the Board Retreat. Above: Friends Dinner Speakers Craig and Kelly Perkins. Below: Group at Friends Dinner includes (left to right) Carolyn Ash, Nancy Lan, Athena Castro, Jim Workman, Dr. Jean Lou Chameau, Susan Murakami, Lee Fisher and Leon Liu. Bottom: Board members Gunilla Hastrup (left), Connie Kofahl and Toni Perpall.



## 2008-09 Board of Directors Executive Committee

**Carolyn Ash**  
Chair

**Susan Murakami**  
Vice Chair

**Peter Mason**  
Treasurer

**Connie Kofahl**  
Secretary

**Ilia Shadrin\***  
ExComm President

**Athena R. Castro**  
Executive Director

### Board Members

- |                        |                       |
|------------------------|-----------------------|
| Robin Abraham *        | Leon Liu *            |
| Abdul Ahad *           | Peter Liu *           |
| Richard Beatty         | Tom Mannion           |
| Abel Bourbois          | Doreen Mason          |
| Donald Brown           | Peter Mason           |
| Pradeep Bugga *        | Robert Nathan         |
| Bill Burrows           | Rory Perkins *        |
| Sunny Chun *           | Robert Perpall        |
| Marshall Cohen         | Toni Perpall          |
| Franklin D. Dryden     | Don Pinkerton         |
| Dean Elzinga           | Jane Pinkerton        |
| Daniel Erickson        | Jean-Paul Revel       |
| Lee Fisher             | Candace Rypisi        |
| Samantha Foster        | DJ Seo *              |
| Steven Frautschi       | Fredrick Shair        |
| Barbara Gee            | Shantanu Sharma       |
| John Gee               | Susan Shen *          |
| David Gillies          | Betty Sirri           |
| Marjorie Gooding       | Norri Sirri           |
| Elissa Habernict       | Deborah Smith         |
| Debra Dison Hall       | Douglas Smith         |
| Gunilla Hastrup        | Boyuan Sun *          |
| Rolf Hastrup           | Leslie Tong *         |
| Eric Hochberg          | Jonathan Tsai *       |
| Catherine Jurca        | Ben Turk              |
| Shankar Kalyanaraman * | Dorothy Tyson         |
| Harry Kawahara         | Howell Tyson          |
| Nancy Lan              | Christina Weng *      |
| Anthony Leonard        | June Wicks *          |
| Gretchen Leonard       | James Workman         |
| David Levy             | (* indicates student) |
| DK Lim *               |                       |

## EXCOMM PRESIDENT'S MESSAGE

Does it stand for a math variable, the human antibody, or the Y chromosome, trying to capture the male-dominated environs of the Caltech past? Jokes aside, when I first read about the Y in the booklet for prefrosh, I imagined it as a mere agglomeration of high school extracurricular clubs. I was quite interested then, to be honest, not because I had any experience with those activities at all in high school, but rather due to an impression naturally laid upon me by the outside perception that there's no "life" at Caltech, and I thought the Y could perhaps keep me "alive". Other than the need for survival, another motivating force was an inner conviction that has gradually developed in me to make a difference. And so I got on board, from merely participating in the activities at first to joining the ExComm and eventually becoming the ExComm President. As my participation increased, my responsibility grew and my passion intensified. Then I started to gradually realize that the Y is more than just an amalgamation of extracurricular clubs, which then forces me to ask another question: What is the significance of the Y?

Why Y? For myself, I have witnessed my own growth through the numerous eye-opening experiences, established friendships, and made a difference in other people's lives. But as my experience and responsibility grew, I realize that there's more to it than just that. In essence, the Y, as the shape of the letter might suggest, is all about connections. It connects one to the world, to other people, and ultimately to themselves. For instance, many of our programs expose

us to different environments, cultures and peoples, and they are mirrors that in turn allow us to get a better perspective of ourselves. As challenging and focused as Caltech can be, these connections can be easily broken, and I have come to see the Y as one of the most pertinent avenues and forces in restoring those connections. In the words of an ExComm member, the Y is "a thread of fabric that binds all of us in the Caltech community together, with values that encompass and transcend our separate influences and origins." It is to this end that the passionate and hard-working students and staff have taken upon themselves the responsibility of continuing and expanding our work. Just to mention a few recent highlights, the ExComm have affirmed their commitment in ratifying an ExComm Responsibility Agreement. Furthermore, we initiated two brand new Alternative Spring Break trips, brought back the Pool Decompression, and expanded our long term service programs. The brainstorming process will not end. We will continue to generate and realize great ideas.

Lastly, I want to thank our benefactors, including all the staff: Athena, Greg, Heather, Christopher, Alycen and Carmelita. Your support has given us students the freedom to dream. With that, we will grow and stay connected in the coming year, striving together to fulfill our motto: "Making a World of Difference!"

### Leon Liu

Class of 2011



## A COMPREHENSIVE LIST OF 2008-09 Y PROGRAMS

### Education, Advocacy & Activism

- Issues Lunches:
  - Darfur
  - Bread for the World
- Washington, DC Science Policy Trip
- Social Activism Speaker Series:
  - Election Programming:
    - Presidential & Vice-Presidential Debate, cosponsored with the GSC (four viewings).
    - National Coming Out Day—Paula Jones, *Making a Difference: How Authentic Leaders Change Their Worlds* (cosponsored with PRISM)
    - Prof. Morgan Kousser, *The Supreme Court and the 2008 Presidential Election*
    - CA Propositions Overview
  - Sam Childers, Angels of East Africa Children's Village
  - Morgan Simon, *A Look at University Endowment Practices: Do You Know How the \$1,000,000 that Supports Your Education is Invested?*
  - Andy Bales, *Overwhelming Injustice: Overcoming NIMBY and Other Systems of Injustice*
  - Jim Fruchterman, *Raising the Floor: Ensuring Technology Fully Serves All of Humanity*
  - Emily Pilloton, *Design Revolution: Solutions that Enable and Empower*
  - LA River Walk in Celebration of Earth Day
  - Jackson Katz, *The Macho Paradox: Why Some Men Hurt Women and How All Men Can Help* (cosponsored with the Caltech Center for Diversity and the GSC)
  - Dr. Hatim Kanaaneh, *A Doctor in Galilee: The Life and Struggle of a Palestinian in Israel*
  - Film Series Cosponsored with Net Impact: *Food Inc.*, *Garbage Warrior*
- PALAC-Caltech Connection (three sessions)
  - Powering the Planet
  - Neuroscience and Dual Mind Theory
  - Today's Economic Crisis and the Great Depression

### Social & Cultural Events

- Explore LA:
  - LA Zoo
  - Phantom of the Opera (two showings)
  - Rent
  - Nutcracker
- Decompression (three events)
- Pre-Frosh Weekend Movie & Ice Cream Social
- Hispanic Heritage Month: Tom Valdez, *Where Your Research Can Take You*, sponsored with the Cultural Programming Group
- Huntington Tea



Above: Make-A-Difference Day volunteer Stephen Meisenhelter. Below right: Nicole Bouley. Below left: Larissa Yee & Ben Zax. Lower middle: Flora Li painting. Bottom: DC trip students Keld Lundgard, Ed Chen, Brandon Quach, Leo Shi.



- International Education Week Lunch: *Himalayan Backpacking*, cosponsored with International Student Programs
- World Fest, cosponsored with International Student Programs

**Outdoor Adventures**

- Y-Hike Backpacking Trip
- Orientation Kayaking
- Monthly Hikes:
  - Full Moon Hike (two hikes): Echo Mountain
  - Day Hikes (seven hikes): Sandstone Peak, Dawn Mine, Switzer Falls, Mt. Baldy, Chantry Flats, Nicholas Flats, Inspiration Point
- Adventure 101 Lunch Talks:
  - Great Hikes in the LA Area
  - Safe Adventuring
  - Winter Adventures
  - Travels in Peru
  - Sailing
  - Kayaking & Wilderness Canoeing
- National Park Camping:
  - Grand Canyon
  - Death Valley
  - Yosemite/Centennial Grove

**Community Service**

- Orientation Service Trip, Boys & Girls Club
- Community Service/Advocacy Fair
- Thanksgiving Dinner in the Park
- MLK Service Day
- Alternative Spring Break—San Diego, Salinas
- Make-A-Difference Day
- Monthly Service Projects:
  - Union Station Homeless Shelter
  - Reading to Kids
- RISE Tutoring (weekly from October through June)

**Programs Supported by the Caltech Y:**

- Caltech C Moon Festival & New Year Celebration
- Veritas Forum
- Friends of Iranian Culture at Caltech New Year Celebration
- OASIS Culture Show



Top: Group at Caltech Centennial Grove. Upper: ExComm members Elaine To and Ilia Shadrin on ASB-San Diego. Above: Caltech Y at Reading to Kids in Downtown L.A. Below: Golf Tournament Volunteers Peter Liu and Sunny Chun with Paul Fleiner.



## GOLF TOURNAMENT AND AUCTION

The Caltech Y hosted its first annual Golf Tournament and Auction in the fall of 2008. Friends of the Caltech Y, Caltech staff, students, professors, and community members enjoyed golf, camaraderie and auction festivities. Brookside Golf Course in Pasadena played host to the Y's Tournament and challenged both advanced and intermediate players. The event proved to be successful and has earned a spot on the Caltech Y's Fall calendar.

The combined Golf Tournament and Auction raised approximately \$13K in its first year. We would like to thank our generous sponsors who helped make this event possible and we look forward to continued collaboration in the years ahead.

### 2008 EVENT SPONSORS

#### Silver Sponsor

John and Barbara Gee

#### Bronze Sponsor

Lee Fisher and Susan Murakami

#### Contest Sponsor

Symes of Pasadena

#### Student Sponsors

Peter and Doreen Mason

Connie Kofahl

Paul Gans

Don and Jane Pinkerton

Lee Fisher and Susan Murakami

#### Trophy Sponsors

Jim and Sue Crisp

### 2008 AUCTION DONORS

American Golf-Brookside Golf Course

Arrowood Vineyards and Winery

Anne Marie Arnerich

Bodega Wine Bar

Bristol Farms

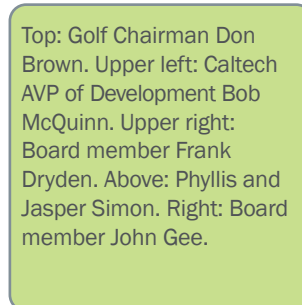
Don Brown

Bucca di Beppo Restaurant

Burger Continental

Caltech Athletics  
Caltech Bookstore  
Chicago for Ribs  
Cigar Aficionado  
Classic Kickboxing  
Cline Cellars  
Marshall Cohen  
Congress Cosmetic  
Medical Corp.

DC Golf  
Disney Worldwide Outreach  
Double Tree Guest Suites  
El Portal  
Forte Salon  
Fu-Shing Restaurant  
Go China  
Green Street Restaurant  
Greg and Patricia Fletcher  
Grgich Hills Estate  
Hagafen Cellars  
Hamlet Restaurant  
Haugh Performing Arts Center  
Hopkins & Company  
Howard's TV  
Huntington Library  
Kidspace Children's Museum  
LA Dodgers  
LACMA/ Decorative Arts Dept  
Laemmlle Theatre  
Marston's Restaurant  
Tom Mannion  
Peter and Doreen Mason



Top: Golf Chairman Don Brown. Upper left: Caltech AVP of Development Bob McQuinn. Upper right: Board member Frank Dryden. Above: Phyllis and Jasper Simon. Right: Board member John Gee.

Norton Simon Museum  
Orpheum Salon  
Parkway Grill  
Peet's Coffee & Tea  
Don and Jane Pinkerton  
John B Riccio  
Jean-Paul Revel  
Sasaki Advanced Aesthetic Medical Center  
Savor the Flavor  
Betty & Norri Sirri  
Shabu Shabu Restaurant  
Doug and Debbie Smith  
Dino Sophia  
Symes of Pasadena  
The Athenaeum  
The Lakers  
The Lodge at Torrey Pines  
The Only Place in Town  
Tiffany & Company of Pasadena  
Trader Joe's  
Twin Palms  
Charles Vorsanger  
Warehouse Restaurant  
Yoshida Sushi

## THE LUCY GUERNSEY SERVICE AWARD

The Lucy Guernsey Service Award was established in 1991 by the Caltech Y ExComm in honor of Lucy Guernsey, the Y's Executive Director from 1989-1991, in recognition of her leadership, dedication to students, and diligence to furthering the Y's commitment to volunteerism.

The 2009 award is shared by Sunny Chun and Tara Gomez. Sunny is a senior majoring in Biology. She has been active with the Caltech Y since her freshman year and is the current Vice President of the Y ExComm. Sunny led the Alternative Spring Break trip to Owens Valley where the group worked with the Owens Valley Committee and Bureau of Land Management to disguise unauthorized trails. She has also served as the student coordinator for Make-A-Difference Day and has tutored for the RISE Program. Her outstanding leadership with the ExComm as well as her dedication to these programs demonstrates her passion for service.

Tara Gomez is the graduate student recipient. She is a fourth year student studying Biology. For the past three years, Tara has worked with Eye Dreams, a non-profit agency which organizes art events for the local community. In addition, she is the current co-director of the Caltech Classroom Connection which partners Caltech graduate students and faculty with science teachers in the Pasadena Unified School District as well as neighboring districts. Tara has also tutored with the Y's RISE Program and has been active with the Graduate Student Council. In addition to her studies and her other volunteer work, Tara has worked with the Huntington Gardens' Explorer Summer Camp as a science instructor.

### 2009 Lucy Guernsey Award Winners

**Sunny Chun & Tara Gomez**

### Previous five Lucy Guernsey Award winners

2008  
Vamsi Chavakula  
Karen Wawrousek

2007  
Abdul Ahad  
Dan Feldman

2006  
Radhika Gowaikar  
Kai Shen

2005  
Sidharth Jaggi  
Eva Murdock

2004  
Spencer Mortensen

## THE PAUL STUDENSKI MEMORIAL AWARD

The Paul Studenski Award, established in memory of former student Paul Studenski, is a travel grant given by the Caltech Y to one or two Caltech undergraduates each year. The grant is to be used to fund time away from campus, during which students can increase self-understanding and reflect on the future by exploring interests that lie outside their formal academic program. The Award is funded by an endowment given to the Caltech Y by the Studenski family and Max Delbruck in memory of Paul Studenski, who was killed in an automobile accident on a trip across the country.

The 2008-09 Studenski Winner is Sarah Hunt. Sarah traveled to Quetzaltenango, Guatemala, where she volunteered with a non-profit organization called the Appropriate Infrastructure Development Group (AIDG). AIDG encourages development through the use of appropriate technologies and business incubation. Sarah studied AIDG's small portable stove that was designed to replace open fires in rural areas. (Use of open fires to cook is associated with many health problems, especially cancer due to smoke inhalation.)

Sarah comments on her experience,

*"Overall, this past summer was one of the best experiences I have had. While I had previously studied some of the problems facing multiple developing nations, they were never real to me before. Problems like malnutrition, lack of educational resources, or women's rights had always been things I read about, and thought about, but it wasn't until this summer that I really felt their effects. As a result of my experiences and my work, I found a new dedication to using my education and abilities in practical ways to change the way people live their lives."*

### 2008-09 Studenski Award Winner

**Sarah Hunt**

### Previous five Studenski Award winners

2007-08  
Erin Flanagan  
Rural Medicine, Tanzania

2006-07  
Elena Hartoonian  
Flamenco Dance, Spain

2005-06  
Herschel Mukherjee  
Environmental Policy, Tunisia

2004-05  
Felicia Katz  
Rural Medicine, Nicaragua

2003-04  
Libin Zhang  
Environmental Volunteer,  
Suriname

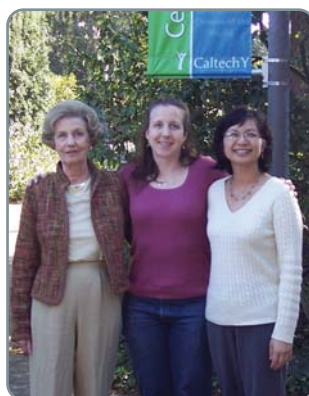
## GIVING TO THE CALTECH Y

When you make a gift to the Caltech Y, you can choose how the funds will be used, as well as many options for making your gift. Unrestricted Gifts allow the Caltech Y to allocate funds wherever the need is greatest. Your gift may be used across the entire spectrum of Caltech Y programs and needs. Directed Gifts allow you to choose the Caltech Y area of interest that most suits your intention. All gifts are tax deductible.

### Types of Gifts

Outright Gifts provide immediate funding for current programs or can be used to build the Caltech Y endowment to ensure a healthy future. Here are some types of gifts for you to consider:

- **Charitable Gifts from IRAs.** You can roll over your IRA to the Caltech Y and exclude the entire amount of that gift from your taxable income (certain limits apply). You can also create a charitable remainder trust as the beneficiary of your IRA, so that your heirs receive income from the trust, and the Caltech Y receives any principal remaining. Great tax savings.
- **Gifts of Personal Property and Gifts in Kind** are great sources of donations. Signed memorabilia, rare books, artwork, and collectibles are sought by the Caltech Y for upcoming fund-raising auctions and events.
- **Cash Gifts** are simple and easy, made directly to the Caltech Y. A minimum gift of \$150 per person or \$300 per couple qualifies you as a Friend of the Caltech Y.
- **Gifts of appreciated securities, stocks, and bonds** can provide a considerable tax advantage if transferred to the Caltech Y before they are sold.
- **Gifts of Real Estate** such as a second property, vacant land or income generating property, can provide a much needed boost to the Caltech Y endowment and provide you with an enormous tax savings. By making a gift of property, donors avoid the capital-gains tax, and, simultaneously, receive a charitable deduction for the full fair-market value of the asset.
- **Charitable Remainder and Lead Trusts** provide for both your heirs and the Caltech Y through annuity income and principal payouts. This is a great option to significantly reduce estate tax.
- **United Way Pledges.** You can contribute indirectly through the United Way throughout the entire year. If you are a Caltech employee, please designate the Caltech Y to receive a 100% Institute match. Other companies offer United Way matching as well. Please inquire at your workplace.
- **Planned Gifts** include bequests, life-income plans and many other estate options. The Caltech Y can help you with your estate planning, please call for more information.



Left: Barbara Gee, Heather Dean & Athena Castro. Middle: Caltech Y Guests on Alumni Day. Above: Gunilla Hastrup helps spread the word about the Caltech Y.

We are grateful to the hundreds of people who support our mission through the annual campaign and additional contributions. We recognize those who have donated so generously this past year. Thank you for your 2008-2009 contributions made from 10/1/2008 and 9/30/2009.

**\$10,000 and above**

Philip and Nancy Naecker  
Caltech (United Way Match)

**\$2,500 and above**

John Andelin and Virginia Geoffrey  
Richard Beatty  
John and Barbara Gee  
Lee Fisher and Susan Murakami  
Bob and Toni Perpall

**\$1,000 and above**

Guilford and Gwen Babcock  
Maisie Barber  
Marshall and Shirley Cohen  
John Edwards  
Dan and Yvonne Erickson  
Jim and Joan Garrels  
Barbara Gee  
John Hall and Nancy Lan  
Robert and Phyllis Henigson  
Carl and Shirley Larson  
Rueben and Donna Mettler  
Don and Jane Pinkerton  
Dr. Simon Ramo  
Jean-Paul Revel  
Rainer Schaaf  
Doris Shimabukuro  
John and Lee Taylor  
Anonymous

**\$500 and above**

Bill and Delores Bing  
James and Janet Black  
Karen Bletzer  
Charles and Darlene Brokaw  
Jane Caughey  
Marian Combs Nichols  
Frank and Marianne Dryden  
David Gakenheimer

Marjory Gooding  
Marka Hibbs  
Catherine Jurca  
Gene and Mary Kulawik  
Truman Long  
Guruswami Ravichandran  
Susan Shen  
Norri and Betty Sirri  
Dave Stevenson  
Debi Tuttle  
Leon Vickman  
Jim Workman  
Joseph and Marge Wyatt  
Anonymous

**\$150 and above**

Gypsy Achong  
Ray and Katie Allen  
Fred and Roxana Anson  
Tom and Jane Apostol  
Carolyn Ash  
Susan Ayer  
Leo and Carole Baggerly  
Fritz and Linnea Benning  
Larry Bergman  
John and Oonah Boppart  
Abel Bourbois  
Paul Brewer  
Bill & Susie Burrows  
Elizabeth Calleton  
Tom and Nancy Carroll  
Sunney and Irene Chan  
Helen Claudio  
Jill Cohen  
Margaret Cole  
William Conner  
Kevin Cooper  
Noel Corngold  
James and Suzanne Crisp  
Dean Currie  
Roc Cutri  
Dean Daily

Chris and Ellen Dalton  
Mary Davis  
Heidi Dillon  
Duane and Ingrid Dipprey  
Hank and Debbie Hall  
Donna Ebenstein  
and Jove Graham  
Jim and Susanna Endrizzi  
Jean Ensminger  
Greg and Carol Evans  
John and June Fee  
Matthias Flach  
Steven and Mie Frautschi  
Kent and Judy Frewing  
Cornelia Fuller  
Paul Gans  
Dave Gillies  
Dlorah Gonzales  
Joseph and Ruth Gordon  
Paul and Susan Graven  
Lucy Guernsey  
Andrew Hafer  
John and Anna Hallstrom  
Rolf and Gunilla Hastrup  
Robert Heath  
Alan Helgesson  
Christopher Henderson  
Peter Hero Charitable Fund  
Barbara Heublein  
Jerry Houser  
Andrew Hsu  
Melany Hunt  
Felicia Hunt  
Seth Jelen  
Marisu Jimenez  
Edward Jou  
Harry and Jane Kawahara  
Robert Kieckhefer  
Connie Kofahl  
Julia Kornfield  
Pamela Koyzis  
Belle Krumholz  
Alan Kulawik

Robert and Margaret Leighton  
 Libby Lent  
 Tony and Gretchen Leonard  
 Gabriel Lopez  
 Gloria Lopez  
 Rhonda MacDonald  
 Rosemary Macedo  
 Mark and Leigh Maier  
 Stanley and Margaret Manatt  
 Antonio Martinez  
 Peter and Doreen Mason  
 Richard McKay  
 Annamarie Mitchell  
 Lothrop and Ingeborg Mittenthal  
 Edwin and Ann Munger  
 Robert Nathan  
 Gail Ngo  
 Danny Howard  
     and Erica O'Neal Howard  
 Carel and Mary Otte  
 Paul Patterson  
 Anthony and Carolyn Pearson  
 Steve Pellegren  
 William Penn  
 Jerome and Nancy Pine  
 Paul and Donna Purdom  
 Milagros Regala  
 Robert Ritchey  
 Jack and Edith Roberts  
 James Roberts  
 Dana Roth  
 Candace Rypisi  
 Dwight and Iris Schroeder  
 John and Patricia Schwarz  
 Fred and Constance Shair  
 Alan and Charlotte Shiller  
 Lee and Arlana Silver  
 Richard and Marion Smith  
 Doug and Deborah Smith  
 Lewis and Beth Smith  
 B.T. Soifer  
 Joann Stock  
 Tim Tabakian

Thomas Tisch  
 Ben Turk and Samantha Foster  
 Yoshiko Tuttle  
 Barbara Green  
 Sharon Wagner  
 David and Kathy Wales  
 Duncan and Mary Walker  
 Van Walkley  
 Ward and Mary Lou Whaling  
 Marc Wold  
 Nathan Wozny  
 Richard Wright  
 Stephanie Yanchinski  
 Sophia Yen  
 Anonymous

**up to \$149**

Mark Abajian  
 Samir Abi-Rached  
 Cynthia Akutagawa  
 Lindy Alo  
 Fernando Amador  
 James Backus  
 Nichole Baker  
 Santiago Barajas  
 Iain Barr  
 Jim Beck  
 Jose Bejar  
 Richard Bing  
 Seth Blumberg  
 Christine Boyle  
 Bruce Brunschwig  
 Edward and Nancy Bryan  
 Zachary Brys  
 Karla Caprari  
 John Carney  
 Galdino Carpintero  
 Dior Chase  
 Yanbei Chen  
 Long Chen  
 Shang-Lin Chen  
 Joe Cheng  
 Eli and Arlene Chernow

Victor Chou  
 Alaric Clinton and Jye Ping Tu  
 Julia Cody  
 Stanley and Sara Cohn  
 Don Crewell  
 Gabriel Cruz  
 Suzette Cummings  
 Jaksa Cvitanic  
 Hall Daily  
 Peter Daily  
 John D'Auria  
 Barbara Day  
 Jesus De La Torre  
 Jose Diaz  
 Julie Dinh  
 Pamela Distaso  
 Clayton and Miriam Englar  
 Marionne Epalle  
 Darrell Fleischman  
 Pam Fong  
 Angelica Frausto  
 Jim Fruchterman  
 Bob Gallagher  
 Salvador Galvez  
 David Gardner  
 Konstantinos Giapis  
 William Goddard  
 Angela Goshorn  
 Julia Greer  
 Galen Hall  
 Robert and Sayuri Hanna  
 Sandra Harlan  
 Pamela Hemann  
 Hal and Marguerite Hennacy  
 Robert and Jennifer Herman  
 Don Hibbard  
 Eric Hill  
 Michael Hill  
 Kayoko Hirata  
 Tuan Hoang and Ellis Meng  
 James and Arlene Hogan  
 William and Sally Holbrook III  
 Huston and Polly Horn

continued on next page

continued from previous page

William Irwin  
 Louis Jensen  
 Dexter Jeremiah  
 Bill and Molly Jones  
 Michele Judd  
 Richard Karasawa  
 David Kauffman  
 Robert Kopp  
 Laurie Kovalenko  
 Warren Lai  
 Thomas Latham  
 Shu-Chen Lee  
 Mark Levinson  
 Wenye Lo  
 Deborah Mahoney  
 Susan Mayeda  
 Priscilla McClure  
 John and Catherine McCourt  
 Susan McCurdy  
 Wendy McKay  
 Gloria McShall  
 Aron Meltzner  
 Stuart Miller  
 Mauricio Morales  
 Thomas Morton  
 Slawek Nadowski  
 Mitchio Okumura  
 Robert O'Rourke  
 Yuri Owechko  
 Joyce Pacheco  
 Curtis and Jenny Pehl  
 Virge Perdue  
 April Pisano  
 Kim Pendorf

Joy Qiu  
 Gloria Rease  
 Francisco Reyes Perez  
 Robert and Rosemary Risley  
 Jerry Rodriguez  
 Jose Rodriguez  
 Leonardo Rodriguez  
 Benjamin Saltzer  
 Victor Sanchez  
 Chad Schmutzer  
 Tapio Schneider  
 Edward Schroeder  
 Bernie Schweitzer  
 Andrew Shaindlin  
 Madeline Shea  
 Brian Smith  
 Stephanie Solario  
 Jorge Sosa  
 Donna Sparks  
 Roger and Norma Sperry  
 Emmeline St. Vaughn  
 Carrie Stubstad  
 Joan Sullivan  
 Maria Suzuki  
 Raul Tello  
 James and Marcia Thessin  
 Janet Wainwright  
 Howard and Suzanne Weisberg  
 William Wheaton  
 June Wicks  
 Gary Wong  
 Lorrie Yamazaki  
 Brian Yandell  
 Judy Young  
 Lijin Zhang

## SPONSORSHIPS & CONTRIBUTIONS

The Caltech Y would like to thank the following campus offices, foundations and community groups for their contributions to and sponsorships of Y programs. Your support makes a world of difference.

- Alumni Association
- Associated Students of Caltech (ASCIT)
- Caltech Employee Federal Credit Union
- Campus Life
- Career Development Center
- Counseling Center and Health Education
- Cultural Programming Group
- Dean of Students Office
- Gnome Club
- GoodSearch
- Graduate Studies Office
- Graduate Student Council (GSC)
- Graphic Resources & Mail Services
- Housing Office
- Housner Fund
- Human Resources
- Industrial Relations Office
- International Student Programs Office
- Master of Student Houses
- Moore-Hufstedler Fund
- Caltech Center for Diversity
- Pasadena Unified School District
- Pasadena Tournament of Roses Foundation
- President's Office
- St. George's Episcopal Church and Dragon Thrift Shop
- Student Affairs
- Student Faculty Programs Office
- Vice President of Student Affairs Office

## BALANCE SHEET

AS OF 9/30/09

Assets	
Cash	\$ 55,170
Receivables	50
Prepaid Expenses	835
Fixed Assets, net	23,035
Endowment Fund Investments, at cost (\$1,504,000 estimated fair market value)	1,734,581
<b>Total Assets</b>	<b>\$ 1,813,671</b>

Liabilities and Fund Balances	
<b>Liabilities</b>	
Accounts Payable	\$ 13,384
CIT Account Payable	61,661
Deferred Revenue	17,590
<b>Total Liabilities</b>	<b>92,635</b>

Fund Balances	
Operating Fund	(13,545)
General Endowment Fund	1,159,485
Hershey Endowment Fund	129,321
Johnson Endowment Fund	130,876
Housner Endowment Fund (new)	179,614
Studenski Endowment Fund	135,285
<b>Total Fund Balance</b>	<b>1,721,036</b>
<b>Total Liabilities &amp; Fund Balances</b>	<b>\$ 1,813,671</b>

The Institute holds income beneficiary funds, for the benefit of the Caltech Y, with valuation and annual income of approximately \$1,394,000 and \$65,000, respectively.

## REVENUE &amp; EXPENSES

YEAR ENDING 9/30/09

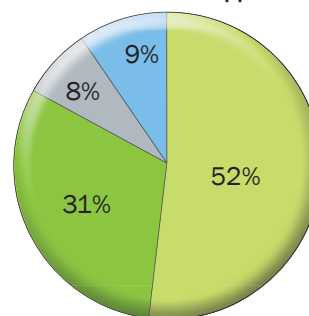
## Revenue and Support

Contributions and Grants	\$ 319,166
Trust and Endowment Income, Excluding Net Unrealized Gains	192,644
Student Program Services	49,111
Special Events and Board	57,949
<b>Total Revenue and Support</b>	<b>618,870</b>

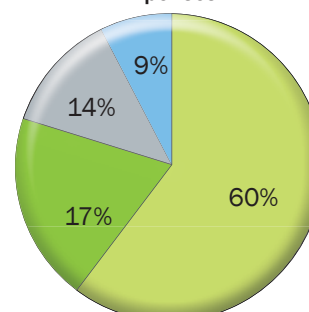
## Expenses

Program Activities	363,543
Management and General	99,971
Development	86,088
Special Events and Board	52,616
<b>Total Expenses</b>	<b>602,218</b>
<b>Excess Revenue over Expenses</b>	<b>\$ 16,652</b>

Revenue and Support



Expenses



# Caltech Y

2008-09 ANNUAL REPORT

**OFFICE**

1350 San Pasqual Street  
Pasadena, California 91106

**TELEPHONE**

626.395.6163

**FAX**

626.395.8890

**E-MAIL ADDRESS**

[caltechy@caltech.edu](mailto:caltechy@caltech.edu)

**MAILING ADDRESS**

Caltech MC 5-62  
Pasadena, CA 91125

**WEBSITE**

[www.caltechY.org](http://www.caltechY.org)

All RISE tutoring and Golf Tournament photos by Bob Paz. Photos by students, staff, faculty and Caltech community.



Top: Annual Ice Cream Social. Middle Upper: Nadia Iqbal and Faith Shuker-Haines tutoring for the RISE program. Left: ASB-San Diego volunteers Ilia Shadrin, DK Lim, and Jason Lunn. Bottom: 2008-09 ExComm.

